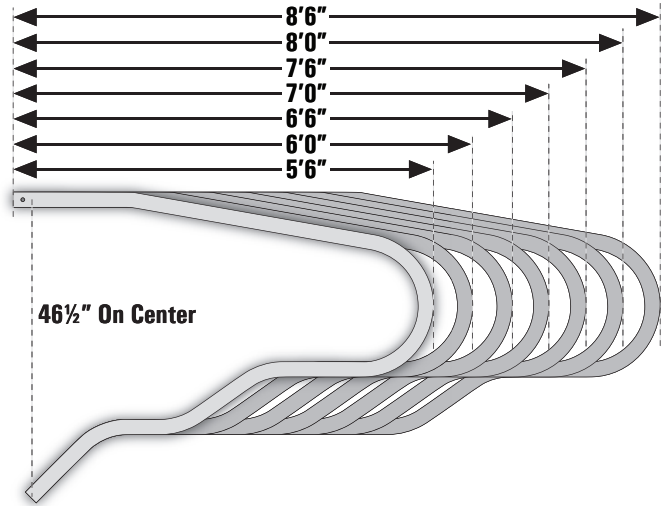


# Post-less Freestall System

J&D's Post-less Freestall System requires less hardware, provides increased headroom, reduces air restrictions and animal injuries. With the benefit of being able to install after cement is poured and with no concern for post placement, this system allows for easy retrofitting without all the complications and adaptations needed with other systems.

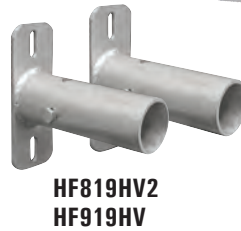
## Features

- No posts needed!
- Hot dip galvanized stall base and control rail clamps for maximum durability
- Increased forward and side-to-side headroom
- Less restrictions on air flow
- Loops engineered for increased cow comfort and safety
- Easy to install system for labor savings
- Tight fitting 1/4" steel control rail clamps with labor saving 1/2" carriage bolts and nylock nuts



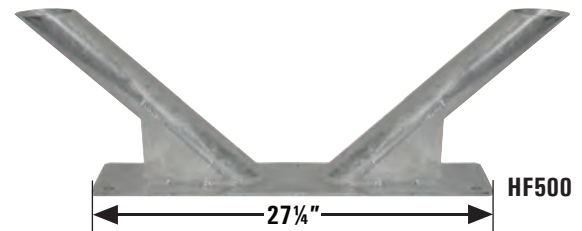
**⚠WARNING:** This product can expose you to chemicals including lead, which is known to the State of California to cause cancer and birth defects or other reproductive harm. For more information go to [www.P65Warnings.ca.gov/product](http://www.P65Warnings.ca.gov/product).

# Post-less Freestall System



Part #	Descriptions
<b>Loops</b>	
TFP856	Loop, Post-Less Freestall, 2 $\frac{3}{8}$ ", 5'6", 10 gauge, Galvanized
TFP860	Loop, Post-Less Freestall, 2 $\frac{3}{8}$ ", 6', 10 gauge, Galvanized
TFP866	Loop, Post-Less Freestall, 2 $\frac{3}{8}$ ", 6'6", 10 gauge, Galvanized
TFP870	Loop, Post-Less Freestall, 2 $\frac{3}{8}$ ", 7', 10 gauge, Galvanized
TFP876	Loop, Post-Less Freestall, 2 $\frac{3}{8}$ ", 7'6", 10 gauge, Galvanized
TFP880	Loop, Post-Less Freestall, 2 $\frac{3}{8}$ ", 8', 10 gauge, Galvanized
TFP886	Loop, Post-Less Freestall, 2 $\frac{3}{8}$ ", 8'6", 10 gauge, Galvanized
<b>Control Rail</b>	
TR1911	Control Rail, 1.9", 11 gauge, 288", Galvanized, Swaged
TR1914	Control Rail, 1.9", 14 gauge, 288", Galvanized, Swaged
TR2375	Control Rail, 2.375", 10 gauge, 288", Galvanized, Swaged
HF42AB	Clamp, Control Rail 1.9" x 2 $\frac{3}{8}$ ", $\frac{1}{4}$ " Steel, HDG, with $\frac{1}{2}$ " Bolts
HF42B	Clamp, Control Rail 2 $\frac{3}{8}$ " x 2 $\frac{3}{8}$ ", $\frac{1}{4}$ " Steel, HDG, with $\frac{1}{2}$ " Bolts
HF43	2-Bolt Clamp, Control Rail 1.9" x 2 $\frac{3}{8}$ ", HDG, with $\frac{1}{2}$ " Bolts
HF819HV2	Mount, 2 $\frac{3}{8}$ " Horizontal/Vertical Pipe Mount, HDG, w/Hdwr (Set of 2)
HF919HV	Mount, 1.9" Horizontal/Vertical Pipe Mount, HDG w/Hdwr (Set of 2)
<b>Bases and Splice</b>	
HF500	Base, Post-Less Freestall, Head-to-Head, HDG
HF501	Base, Post-Less Freestall, Single Row, HDG
HF510	Clamp, Stall Splice, 2 $\frac{3}{8}$ ", HDG, w/ Hardware

See our Brisket System literature for all your brisket needs.



**⚠ WARNING:** This product can expose you to chemicals including lead, which is known to the State of California to cause cancer and birth defects or other reproductive harm. For more information go to [www.P65Warnings.ca.gov/product](http://www.P65Warnings.ca.gov/product).